

Product Capacity:

Ethanol: 10 million gallons per year
95% alcohol: 700,000 gallons per year
Wet Distiller's Grain: 48,000 – 53,600 tons per year
Syrup: 33,000 – 37,000 tons per year

Raw Material: Corn

History: Built 1996, Upgraded 2006, Shut down 2015

Annual Material Consumption

Corn: 165,600,000 lbs
Ammonia: 222,400 lbs
Caustic: 1,038,166 lbs
Sulfuric acid: 799,935 lbs

Utility Consumption

Natural Gas: 25,900 BTU / gal ethanol
Electricity: 1 KW / gal ethanol

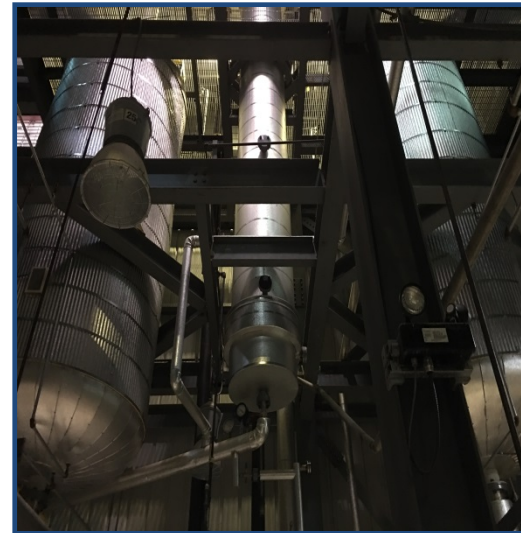
Major Equipment

- Centrifuge (2005)
- Beer Column (2006)
- Stripper Column (2006)
- Acid Reduction Column (2006)
- Rectifier Column (2006)
- Molecular Sieve Vessels (2006)
- Regeneration Receiver (2006)
- Hammer Mill A (2000) & B (2007)
- Condensate Separator (2006)
- CO2 Scrubber (2006)
- Liquefaction Tank A & B (1999)
- West Yeast Propagation Tank (2006)
- East Air Compressor (2014)
- Dilute Caustic Tank (2006)
- Liquefaction Tank (2006)
- Condensate Exchanger (2006)

For detailed plant information, contact
Edward Zhang
edz@phxequip.com

To discuss plants you are selling
Jesse Spector
jesse@phxequip.com

10 MM GPY Ethanol Plant



BRIEF PLANT DESCRIPTION

Phoenix Equipment currently has for sale a complete 10 MM gallons/year ethanol plant. The plant was originally commissioned in 1996, and upscaled around 2005 - 2006. Many equipment items have been replaced with new ones in the recent years. The new equipment is designed according to industrial standards for continuous operation (24 hours/day, 7 days/week). The plant includes all process areas: Grain Receiving and Storage, Corn Cleaning and Milling, Liquefaction and Cooking, Yeast Propagation and Fermentation, Distillation, Dehydration, Stillage Evaporation, Stillage Separation, WDG Storage and Shipping, Fuel Ethanol Storage and Loading, CIP System, and Chemical Storage. The plant yield is an average of 0.5 lb of anhydrous ethanol and 0.49 lb of WDG (wet cake) per lb of fermentable starch. Instrumentation is mainly Endress Hauser. Operation system is Siemens PCS7 installed in 2015.