

## IMO DELAVAL Steam Turbine Generator for Sale

**Capacity:** 11 MW

**Year Built / Shut Down:** 1988 / 2015

**Steam Turbine:**

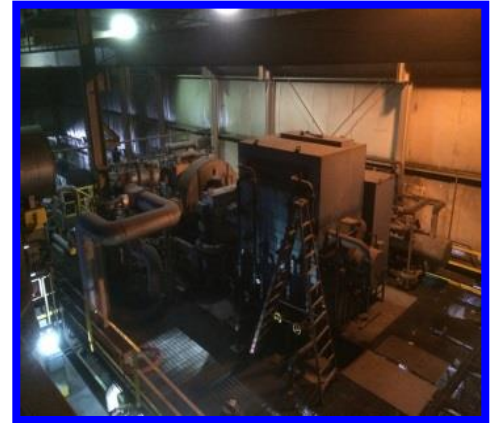
Manufacturer IMO DELAVAL  
Model HJ-MV-SF-SAE  
Stage Number 9  
Speed 8,936 rpm  
Rating 10,695 KW  
Steam Pressure 645 PSIG

**Generator:**

Manufacturer Electric Machinery  
(Dresser)  
Type Enclosed Water Cooled  
Voltage 4,160  
Frequency 60 Hz  
Rating 12,222 KVA  
11,000 KW  
Power Factor 0.9  
Speed 1,800 rpm

**Gear:**

Manufacturer Philadelphia Gear  
Type Single Reduction Parallel  
Axis  
Model 17HSA  
Rating 14,751 KW  
11,000 KW  
Service Factor 1.3  
Point Speed 8,936 rpm  
Gear Speed 1,800 rpm  
Ratio 4.964 : 1



**For more information contact -**

Edward Zhang, Plant Sales  
[plants@phxequip.com](mailto:plants@phxequip.com)  
+1 732.520.2187 (Direct Dial)  
+1 845.242.3378 (Mobile)

**To discuss plants you are selling -**

Jesse Spector  
[plants@phxequip.com](mailto:plants@phxequip.com)  
+1 732.709.7157 (Direct Dial)  
+1 908.902.8854 (Mobile)

### BRIEF PLANT DESCRIPTION

The De Laval turbine used trumpet shaped nozzles to extract most of the expansion energy from the steam. It is the use of multiple stages and more gradual steam expansion among the stages that leads to the greater efficiency at slower speeds. The different diameters at each stage are what allow for expansion on steam turbine rotor.