

Just Purchased – API Pilot Plant #3 Liquidation! Includes (13) Glass Lined Reactors (2) Hastelloy Reactors (3) Basket Centrifuges (6) Block Heat Exchangers (7) High Alloy Heat Exchangers (1) Graphite Heat Exchanger (3) Scrubber Systems (1) Vacuum Pump System (3) Vacuum Shelf Dryers (3) Vacuum Ovens (2) Chillers (2) Stainless Steel Pressure Vessels (1) 24" Thomas Accela-Cota (1) Glatt GCPG5 and Much More!

Centrifuges – Basket

7329 36" x 20" Western States Stainless Steel Basket Centrifuge, Model EZ300, 90 #/Cu Ft Density, 30 HP Electric Drive, Top Load/Unload, Tilting Top Head, Heresite Lined, Serial #541



7329

7302 32" Dia Tolhurst Basket Centrifuge, 82#/Cu Ft Density, Hinged Cover

7315 30" Dia Tolhurst Basket Centrifuge, Heresite Lined, MN IBI, Electric Drive

Chillers

7339 Continental Chiller, Water Cooled, Model CXW-75FP, R22 Refrigerant, 75 HP, 3/60/460V, Serial #160530-020494



7339

7348 Carlyle Compressing Co., Chiller, Model 07HY060DH601F10, R22 Refrigerant

Coating Pans

7301 24" Thomas Engineering Accela-Cota

Fluid Bed Coaters

7300 Glatt GCPG 5 Fluid Bed Coater

Heat Exchangers – Block Type

7309 85 Sq Ft Cubic Block Graphilor Heat Exchanger, Model K90/45, 75# at 350 F, Built 1992

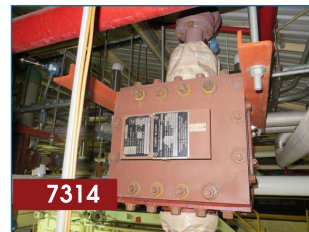
7311 85 Sq Ft Cubic Block Graphilor Heat Exchanger, Model K90/45, 75# at 350 F, Built 1992

7310 38 Sq Ft Cubic Block Graphilor Heat Exchanger, Model K40/20, 75# at 350 F, Built 1992

7312 38 Sq Ft Cubic Block Graphilor Heat Exchanger, Model K40/20, 75# at 350 F, Built 1992

7313 38 Sq Ft Cubic Block Graphilor Heat Exchanger, Model K40/20, 75# at 350 F, Built 1992

7314 38 Square Feet Cubic Block Graphilor Heat Exchanger, Model K40/20, Shell Rated 75 psi / FV @ 350 F, Serial #8871, National Board #106, Built 1992



7314

Heat Exchangers – High Alloy

7322 100 Sq Ft Andrew B. Duffy Vertical Heat Exchanger, Tubes 150#, Built 1998

7338 45 Sq Ft Pfaudler Tantalum Horizontal Heat Exchanger, 150#/150#, Built 2000

7336 42 Sq Ft Pfaudler

Hastelloy Horizontal Heat Exchanger, Shell Rated 150 psi / FV @ 450 F, Tubes Rated 150 psi @ 450 F, Type BEM 08-60, 86 5/16" OAL, (50) " Tubes, 0.065" Thick, (Hastelloy SB-626 AI C-276, WLD), (2) 3" Inlet/Outlet, (2) 1-1/2" Inlet/Outlet, (2) 1" Vent/Drain, Serial #J040815, National Board #50295, Built 2000. Weight – 545 Lbs. Previous Use: API Pilot Plant



7336

7354 41 Sq Ft Pfaudler Tantalum Horizontal Heat Exchanger, 150#/150#, Built 1998

7323 20 Sq Ft Pfaudler Tantalum Horizontal Heat Exchanger, 150#/150#, Built 1998

7324 20 Sq Ft Pfaudler Hastelloy Horizontal Heat Exchanger, 150#/150#, Built 1998

7334 15 Sq Ft Pfaudler Tantalum Horizontal Heat Exchanger, Shell Rated 150 psi / FV @ 450 F, Tubes Rated 150 psi @ 450 F, Type BEM 06-48, 68 5/8" OAL, (19) 3/4" Tubes, 0.015" Thick, (Tantalum 2.55% w), (2) 3" Inlet/Outlet, (2) 1-1/2" Inlet/Outlet, (2) 1" Vent/Drain, Serial #J040813, National Board #50300, Built 2000. Weight – 285 Lbs. Previous Use: API Pilot Plant



7334

**High Quality Process Equipment.
Select from Our Recent Equipment
Acquisitions.**

Phoenix
equipment corporation

Heat Exchangers – Graphite

7332 34 Sq Ft Metallulics Systems Co. Graphite Shell & Tube Heat Exchanger, 75#/75#, Built 1992

Ovens

7344 Gruenberg Stainless Steel Atmospheric Oven

7345 Gruenberg Vacuum/Convection Ovens, Model C/VI5H4.5M, 9KW

7346 Gruenberg Vacuum/Convection Ovens, Model C/VI5H4.5M, 9KW

Reactors – Glass Lined

7340 500 Gallon Pfaudler Glass Lined Reactor, 25#/90#

7303 300 Gallon DeDietrich Glass Lined Reactor, 100#/90#, Built 2005

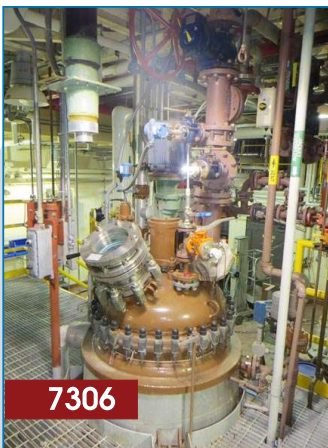
7305 200 Gallon DeDietrich Glass Lined Reactor, 150#/100#, Built 1992

7337 200 Gallon Pfaudler Glass Lined Reactor, Rated 150 psi / FV @ 450 F Internal, and 150 psi / FV @ 450 F on the Jacket. 9119 Dark Blue Glass. Pfaudler VMX250 Drive. 40" ID x 45" Deep. 4 Blade Reverse Curve Impeller Agitator. (1) 6" Inlet; (1) 4 3/8" Inlet; (2) 4" Inlet; (5) 3" Inlet. Serial #J040751/J050306, National Board #50306, Built 2000



7304 100 Gallon DeDietrich Glass Lined Reactor, 150#/100#, Built 1992

7306 100 Gallon DeDietrich Glass Lined Reactor, Rated 150 psi / FV @ 500 F Internal and 100 psi @ 500 F on the Jacket. Cone Bottom. Serial #1342, National Board #316, Built 1992



7319 100 Gallon Pfaudler Glass Lined Reactor, 150#/125#, Built 1998

7331 100 Gallon Pfaudler Glass Lined Reactor, 150#/150#, Built 1992

7308 50 Gallon DeDietrich Glass Lined Reactor, 150#/90#, Built 1992

7320 50 Gallon Pfaudler Glass Lined Reactor, 150#/125#, Built 1998

7327 50 Gallon Pfaudler Glass Lined Reactor, 300#/150#, Built 1995

7333 50 Gallon Pfaudler Glass Lined Reactor, Rated 150 psi / FV @ 450 F Internal and 150 psi / FV @ 450 F on the Jacket. 9119 Dark Blue Glass. Pfaudler VXX150 Drive. 4 Blade Reverse Curve Impeller Agitator. 24" ID x 28" Deep. Serial #J040750, National Board #50304, Built 2000

7307 30 Gallon DeDietrich Glass Lined Reactor, 150#/115#, Built 1992



Reactors – Hastelloy

7335 150 Gallon Pfaudler Hastelloy Reactor, Rated 150 psi / FV @ 450 F Internal and 150 psi / FV @ 450 on the Jacket. Shell Material SB-525 C-22; Jacket Material 316L. 32" ID x 48" Deep. 4 Blade Turbine Agitator. (1) 6" Handhole; (1) 4" Inlet; (5) 2" Inlets; (3) 3" Inlet/Outlet; (3) 2" Jacket Connections; (1) " Jacket Connection; (1) " Jacket Connection. Serial #J070452, National Board #50372, Built 2001

7321 30 Gallon American Alloy Fabrication Hastelloy Reactor, 150#/125#



**High Quality Process Equipment.
Select from Our Recent Equipment
Acquisitions.**


Scrubber Systems

7353  Used 75/500 scfm gas scrubber, mfg. by Misonix Inc. in 2001, model #MVS-25650 & 15650. Design Conditions: Design Pressure: for both scrubbers - 1 psig/1 psig, Design



Temperature: 150 Deg. F, Maximum gas flow rate to scrubber C-08A = 75 SCFM, Maximum gas flow rate to scrubber C-08B = 500 SCFM. Unit has (2) fans, each rated @ 500 CFM gas flow @ 17" W.C. static pressure with 5 HP XP motors, (2) polypropylene circulating pumps and (1) Hastelloy "C" plate heat exchanger

7351 HCL Scrubber by Luftrol Inc., Model KP24-42, Built 1992


7328  Sly Impingent Gas Scrubber Consisting of (2) Model 215 Polypopyle Towers and (2) 5HP NY Blowers with XP Motors. The Unit was Designed to Operate at 850 CFM, 7GPM at 11.5 Ph and 15 Feet of Packing would Reduce the H2S from 5000 ppm to 1 ppm, Built 1990



Tanks & Pressure Vessels

7355 500 Gallon Precision Stainless Inc. 316L Stainless Steel DI Water Tank, 40# @350 F

7359 170 Gallon Precision Stainless Inc. Horizontal Stainless Steel Tank, 50# @ 550 F, Built 1998

7357  100 Gallon Northland Stainless Inc Horizontal 316L Stainless Steel Tank / Pressure Vessel. Rated 50 psi / FV @ 650 F. 2'6" ID x 3'9" OAL. On Saddles. Serial #00-13604, National Board #2872, Built 2000. Weight - 880 Lbs. Previous Use: API Pilot Plant




7360 Hebelor Corp Stainless Steel Tank, 100# @ 550 F, Built 1998

Vacuum Dryers

7330 60 Sq Ft Stokes Stainless Steel Vacuum Shelf Dryer, 50 psi / FV @ 650 F

7341 42 Sq Ft Stokes Heresite Lined Vacuum Shelf Dryer, (7) 2' x 3' Shelves



7317  5 Cu Ft Paul O. Abbe Double Cone (Rota-Cone) Hastelloy Rotary Vacuum Dryer, Model RCVD-30. With Intensifier Pin Bar. Rated 50 psi / FV @ 350 F Internal and 50 psi @ 350 F on the Jacket. With Stands. Serial #A44939 (3W137), Built 1994

Vacuum & Gas Pump Systems

7316 Nash Vacuum Pump System, Model AHF50, Skid Mounted w/ Stainless Steel Manifold, Fisher Control Valve and Explosion Proof Controls

7318 Graham Precision Pumps Gas Pump

7343 Fybroc Pump, Model 1500 1x1.5x8, 125#, 80 GPM



View Our Complete Inventory Online!
Over 40 categories of used and unused process equipment in stock.